

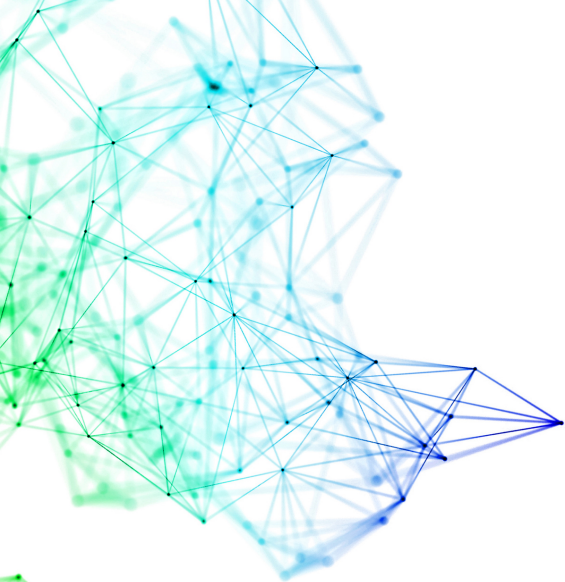
The WSU ACC presents...

**Connect,**  
**Engage, &**  
**Empower:**

**Facilitating the New Normal**

**September 27, 2023**  
**Wayne State University**  
**Student Center Building**





# Table of Contents

President's Welcome.....page 2

Conference Planner Welcome.....page 3

Conference Agenda.....page 4

Keynote Speaker.....page 5

Executive Board & Standing Committee Chairs.....page 6

Concurrent Session Descriptions.....pages 7-18

Get Involved.....page 19

Thank You

The Academic Advising Council would like to recognize and thank the summit planning committee for all of their hard work in putting today's event together.

- Robert Hellar, Chair
- Cheryl Kollin
- Dan Hanrath
- Amanda Horwitz
- Dawn Niedermiller
- Desmond Mack
- Rachel Pawlowski
- Jessica Pfeiffer
- Emily Reetz
- Angel Niederkohr

# **2023 AAC Summit:** **President's Welcome**



Welcome to our annual AAC Summit! It is so important that we have these opportunities to connect with each other and engage in professional development. The work of academic staff is fundamental to our student's success and the success of the university, so I hope today's sessions will help to inspire and motivate you.

Thank you to the amazing Summit chair, Robert Hellar and the entire committee that works so hard to plan this event. If you have a chance today, please say thank you to members of that group.

Please connect with me or any of the AAC members if you have any questions about how you can get involved in the Academic Advising Council.

Emily Reetz  
AAC President

# **2023 AAC Summit: Conference**

3

## **Planning Chair Welcome**

Dear 2023 AAC Summit Attendees,

It would be difficult to overstate how thrilled I am to see you on the WSU campus for the 2023 Academic Advising Summit- “Connect, Engage & Empower: Facilitating the ‘New Normal.’” I am excited for a day of collaborative learning, professional development, and mentoring for the Academic Staff. My goal is for the advisors to explore innovative ideas, connect with old friends, and create new networks face to face from across campus.



As I collaborated with the Academic Advising Summit Planning Committee to plan this conference, we came together to provide a great venue for discussions on how we, as advisors, can return to “normalcy” and make campus re-engaged for both advisors and students. All of this will lead to tremendous student success. I would like to take a moment to acknowledge and thank everyone on the committee who helped make this event possible.

Let us enjoy this day together and appreciate the vital role we have in the lives of our students, not only as advisors but also as a beacon of light to help them reach their goal and earn their degree.

Stay Warrior Strong!  
Robert Hellar  
2023 Summit Chair

# Today's Schedule

Time	Event	Location
8:30am	Check In Begins	SCB
9:15am	Introduction	Ballrooms
9:25am	Keynote Speaker: Dr. Barnett	
10:30am	Breakout Session 1	Hilberrys: A, B, C
11:30am	Lunch	Ballrooms
12:30pm	AAC Business Meeting	
1:00pm	Breakout Session 2	Hilberrys: A, B, C
2:00pm	Student Roundtable	Ballrooms
3:05 pm	Breakout Session 3	Hilberrys: A, B, C



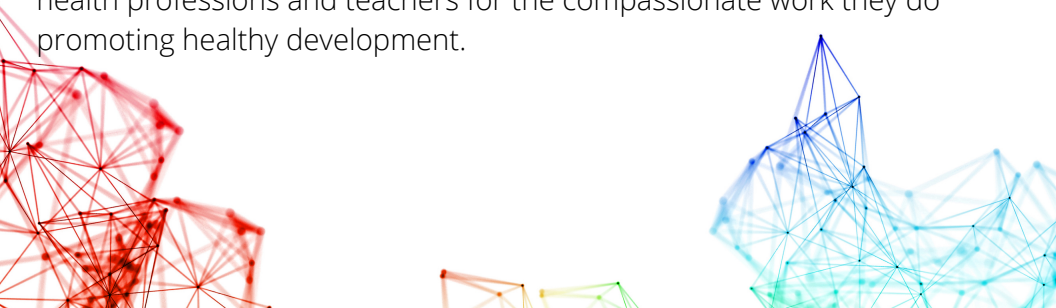
# **Keynote Speaker:**

## **Douglas Barnett, PhD**



Professor,  
Dept. of Psychology  
Wayne State University

Douglas Barnett, PhD, LP is Professor of Psychology at Wayne State University's College of Liberal Arts and Sciences. He grew up in Boston, graduated with a BA from Boston University; went on to earned his doctorate at the University of Rochester, NY; and sought work in Detroit, joining the faculty at Wayne State in 1992. Doug's community based research has focused on family strengths and resiliency in the face of significant challenges such as persistent poverty, minoritization, community violence, child maltreatment, child disability, child chronic medical conditions, trauma exposure and parental loss. Doug is most proud of the children and families he has helped and his many partnerships to support community programs, agencies, schools, clinics, hospitals, and after school programs throughout metropolitan Detroit, including Wayne State University. He especially likes to champion mental health professions and teachers for the compassionate work they do promoting healthy development.



# **AAC Executive Board & Committee Chairs**

## **2023-2024 Executive Board**

President (2023-2024).....	Emily Reetz
President Elect (2023-2024).....	Marissa Henderson
Secretary.....	Keanu Respass
Treasurer.....	Angel Niederkohr
Member at Large Non-Prof. School (2023-2025)..	Tuoanyene Sims
Member at Large Non-Prof. School (2023-2024)..	Monika Saladiak
Member at Large Prof. School (2023-2025).....	Kate MacCourtney
Member at Large Prof. School (2022-2024).....	Robert Hellar
Past President.....	Elizabeth Hill
Administration Liaison.....	Cheryl Kollin

## **2023-2024 Standing Committee Chairs**

Membership and Nominating (2022-2024).....	Rachel Pawlowski
Communication (2022-2024).....	Desmond Mack
Advising Summit Planning Committee (2022-2024)..	Robert Hellar
Training (2022-2025).....	Margaret MacKeverican
Community Service (2022-2025).....	Geoffrey Jones
Membership Engagement (2022-2025).....	Caretta Cooke
Membership Engagement (2022-2025).....	Brittany Thomas



# **Session 1 Descriptions: 10:30-11:25am**

## **Explore My Identity**

**Presenter:** Dr. Douglas Barnett, PhD, Psychology

**Location:** Ballrooms

This activity is meant to be experiential and then passed on to college students who you assist. There are five steps to this activity, designed to promote greater self-knowledge and promote motivation and achievement. Step one involves gathering relevant data about yourself. Step two involves noticing what is and is not on your list. Step three involves identifying a goal. Step Four involves developing a plan to reach the goal. Step five involves making a creative pamphlet about yourself. At each step, reflection and discussion is encouraged.

### **Notes:**

Use the QR code to the right to complete the evaluation for THIS session.



## **Session 1 Descriptions: 10:30-11:25am**

### **Gen Z First-Generation Unleashed: Navigating the Shifting Landscape of a Digital Generation by Embracing Challenges and Fostering Success**

**Presenter:** Helen Wilson, Pre-med & Health Science Center and Nora Alhussainy, Biological Sciences

**Location:** Hilberry A

Gen Z students are known as the digital generation and make up a large part of our student population at Wayne State University (WSU). These students are certainly shifting the landscape of higher education and in particular, our university. Advisors are challenged to navigate this digital generation and understand the characteristics of these Gen Z students. As advisors, we are finding ways to engage and connect with them. Many of the Gen Z students are also First Generation with no parent that attended college. This session will focus on how advisors can help Gen Z students embrace their challenges and foster success. The resilience and the determination of Gen Z First-Generation students will be discussed and how these traits contribute to success of these students. Participants will take away practical ideas to empower these Gen Z First Generation students and adjust to the realities of advising this digital generation.

#### **Notes:**

Use the QR code to the right to complete the evaluation for THIS session.



## **Session 1 Descriptions: 10:30-11:25am**

### **Increasing the numbers: Connecting, Engaging, & Empowering more Black and Latinx Males in Social Work education/practice**

**Presenter:** Lawrence Robison, School of Social Work

**Location:** Hilberry B

It is no secret that the social work workforce is overwhelmingly white and female dominated. While exact numbers are hard to come by, the Council on Social Work Education reports new MSW graduates for 2017 were 83 percent female, and only 14 percent of graduates being male (CSWE, 2017).

Meanwhile, the gap in the representation of African American and Latino men as social workers is punctuated by the fact that men of color are overrepresented as clients in the field of social welfare as well as in the criminal justice system.

Last year, through the Black and Latino Male Initiative, the WSU School of Social Work engaged 24 Students and 50+ Social Work professionals and community members to foster support for current students and to demystify the Social Work Profession. We will present an overview of our working program to increase Black and Latinx Males within the Social Work profession.

#### **Notes:**

Use the QR code to the right to complete the evaluation for THIS session.



# **Session 1 Descriptions: 10:30-11:25am**

## **3 Peas in a Pod**

**Presenter:** Sean Novak, Psychology

**Location:** Hilberry C

How do I develop a podcast? How do I develop content for a show? What programs can I use to create (or convert/import) music and background ambience for the show? How do I distribute my creation? Learn this and more as I plant seeds for you, the newest producer of podcasts. I will talk about how to and the benefits of creating a podcast to deliver important information to your audience. With people on the go, creating a podcast to deliver information can be convenient for learners on the move. Join me for this interactive session as I share the steps taken to develop “Advising Unfiltered”, a podcast created by academic advisors out of the Dept. of Psychology at Wayne State University.

**Notes:**

Use the QR code to the right to complete the evaluation for THIS session.



## **Session 2 Descriptions: 1-1:55pm**

### **Creating Engaging Mental Health Outreach and Education on a University Campus Post Pandemic**

**Presenter:** Stephanie Kastely, Patricia Dixon, CAPS

**Location:** Ballrooms

Education on mental health concerns and building resiliency during stressful times does not need to follow one format. Creativity in providing mental health outreaches and educational programming can immerse an audience and usher in helpful discussions on mental health and combat mental health stigma. Engagement can emerge when others feel comfortable and supported in discussing mental health. Creative methods of delivery in mental health educational programming and creative topics about mental health can encourage others to seek support and think about mental health concerns in a different and healthier way. The presentation explores with attendees how to discuss mental health with university students, faculty/staff, and families in a way to encourage discussions about mental health without fear and push back against stigma of mental health. Discussion on outreaches in a virtual format and providing mental health outreach events virtually during pandemic will also be discussed.

**Notes:**

Use the QR code to the right to complete the evaluation for THIS session.



## **Session 2 Descriptions: 1-1:55pm**

### **Leveraging Canvas as a Tool for Connection, Engagement, and Empowerment**

**Presenter:** Margaret MacKeverican, Lauren Orr, Ronnie Alvarez, Public Health

**Location:** Hilberry A

Research shows that students who are engaged in their undergraduate career are more likely to persist to graduation (Astin, 1984; Kuh, 2003; Quaye, 2019), and advisors are uniquely positioned to guide students toward opportunities for connection, engagement, and empowerment. For the Advising Team in the Department of Public Health, a crucial tool for doing so is our departmental Canvas site. Do you want to know how you can leverage Canvas to connect, engage, and empower? Come learn how the Department of Public Health utilizes Canvas as a home base for a variety of connection and engagement initiatives. Don't worry, we plan on coaching you on how you can do it, too!

**Notes:**

Use the QR code to the right to complete the evaluation for THIS session.



## **Session 2 Descriptions: 1-1:55pm**

### **The Evolution of Undergraduate Research a High-Impact Practice- Past, Present and Future**

**Presenter:** Kim Hunter, Biological Sciences

**Location:** Hilberry B

The use of undergraduate research as a high-impact practice engages undergraduate students in the laboratory of a faculty mentor to support the development of the next generation of scientists. Exposure to undergraduate research is also an important extra-curricular activity desired by professional and graduate programs. Over the last 20 years, the department of Biological Sciences has been actively working to improve the undergraduate research experience for its students. This session will look at the evolution of the undergraduate research program and share the best practices and developments the department has made to improve its research experience for students. A conversation about the setback resulting from COVID, as well as future plans to round out our programming will be included. Comments and materials from students and faculty regarding the existing program and experiences will be shared.

#### **Notes:**

Use the QR code to the right to complete the evaluation for THIS session.



## **Session 2 Descriptions: 1-1:55pm**

### **Ethics and Integrity in Advising: Engaging our Best Selves to Empower our Best Solutions**

**Presenter:** Kate Bernas, Advisor Training Academy, and Stacie Moser, Sociology

**Location:** Hilberry

Advisors are often called on to engage in ethical decision-making in their work with students and other university staff.

Additionally, as campus leaders and role models to our students, our ability to identify and assess an ethical dilemma and act with integrity to resolve it, is key to our professional practice and serves as one of the Core Values of our profession (NACADA, 2005). In this session, we will discuss how these dilemmas might arise and engage with each other to discover how our values and ethical reasoning shape our responses. Through a case-study approach, attendees will benefit from multiple viewpoints and approaches and come away with both a reflective framework for decision-making that seeks to serve the student, the institution, and our own advising values, as well as an empowered appreciation for the implications of our role.

#### **Notes:**

Use the QR code to the right to complete the evaluation for THIS session.





# **Session 3 Descriptions: 3:05-4:00pm**

15

## **Diversifying Your Joy**

**Presenter:** Rachel Pawlowski, Honors College

**Location:** Ballrooms

What Advisor doesn't love their job, right? But after almost 10 years of being an advisor at WSU, sometimes the normal daily grind doesn't bring joy the way it used to before. I mean, how many class schedule can one person build?? Rachel will spend this session showing the ways that she has learned to diversify her joy. She will explain how her involvement in living learning communities, participation in professional organizations, engaging in self care, and continuing her education has helped her to continue to find joy in her work and to help her to expand her definitions of joy.

### **Notes:**

Use the QR code to the right to complete the evaluation for THIS session.



## **Session 3 Descriptions: 3:05-4:00pm**

### **Connection & Engagement: The 'Insta' Growth of @wsuprehealth**

**Presenter:** Amanda Horwitz, Pre-Med & Health Science Center

**Location:** Hilberry A

In the ever-growing age of technology, connecting with students in-person has become challenging. If advisors want to continue to provide the wealth of knowledge they work so tirelessly to grow and maintain, they need to find new ways to CONNECT with and ENGAGE students. Social media, Instagram in particular, has proved to be a way that individuals CONNECT and ENGAGE with one another, making people seem more approachable, questions easier to ask, and information more accessible. The Pre-Med & Health Science Center (PMHSC) has worked diligently to develop an Instagram account that CONNECTS students with information and ENGAGES students in actions (liking, commenting, sending direct messages). This presentation will cover the what and why of Instagram and the ways that the PMHSC continues to use it as an additional resource for on- and off-campus events, and to celebrate the success of our students.

#### **Notes:**

Use the QR code to the right to complete the evaluation for THIS session.



## **Session 3 Descriptions: 3:05-4:00pm**

### **The Only Constant is Change: Intercollegiate Athletics at WSU and Beyond**

**Presenter:** Casey Rue, College of Engineering, and Kim Clexton, Athletics

**Location:** Hilberry B

Intercollegiate athletics, both at WSU and elsewhere, are facing new opportunities, challenges, and an ever-evolving landscape. At WSU, some long-time coaches and administrators have left their roles, paving the way for new staff, and a new way of doing things. Also, student-athletes have been granted new opportunities to profit from their name, image, and likeness, which has never previously been allowed. In addition, new conference affiliations are occurring on a yearly basis. Join Kim Clexton and Casey Rue as they discuss the state of Intercollegiate Athletics at WSU and beyond, and how it still fits within the overall mission of higher education.

#### **Notes:**

Use the QR code to the right to complete the evaluation for THIS session.



# **Session 3 Descriptions: 3:05-4:00pm**

18

## **The Power of Success Coaching**

**Presenter:** Kimberly Swisher, Marla Garmo & Caretta Cooke, Warrior 360

**Location:** Hilberry C

Success coaching is a critical, individualized practice designed to motivate students, teach them how to plan, make decisions, and learn effective strategies for being successful. Developing a strong coaching mentality is key for every individual working with students at the collegiate level. In Warrior 360, Success Coaches are assigned a care load of students who we monitor and support during the entirety of their first academic year. Many of the strategies that we utilize to promote and support student success can be implemented by other higher education professionals on Wayne State University's campus. In many cases, asking simple prompting questions can shed light on a student's personal, emotional, and academic well-being, which ultimately allows staff to connect them with the best resources on campus to receive the necessary support. This session will not only share successes from Warrior 360 but will also provide best practices for supporting long-term student success.

### **Notes:**

Use the QR code to the right to complete the evaluation for THIS session.



# The Academic Advising Council Wants You!

If you are interested in getting involved in the Academic Advising Council as a standing committee chair or committee member, please reach out to Emily Reetz (bb0067@wayne.edu).

Learn more about ways to get involved by scanning the QR code to the right.



# Save the Date: DEI & Academic Advising Seminar

**Friday, November 17 from 9-4 in the Hilberry Rooms of  
the Student Center**

Featuring a workshop with **Dr. CJ Venable:**

Advisors have great responsibility to not only serve each student as they are, but also to help build the kind of campus environment where every student belongs and can thrive. In this workshop, we will explore how advisors can be allies and advocates for change that advances toward justice. Join us to explore how we can honor understandings of diversity that are about the self and others while also deepening our understanding of our ability to create meaningful change on campus. This event is aligned with the NACADA Core Competencies, especially C6 (How equitable and inclusive environments are created and maintained) and I5 (The characteristics, needs, and experiences of major and emerging student populations).

**Access the pre-workshop modules NOW in the ATA Canvas page.**

**Come to the Advisor Drop-In on October 4 to learn more!**

RSVP for the in-person event is forthcoming.

